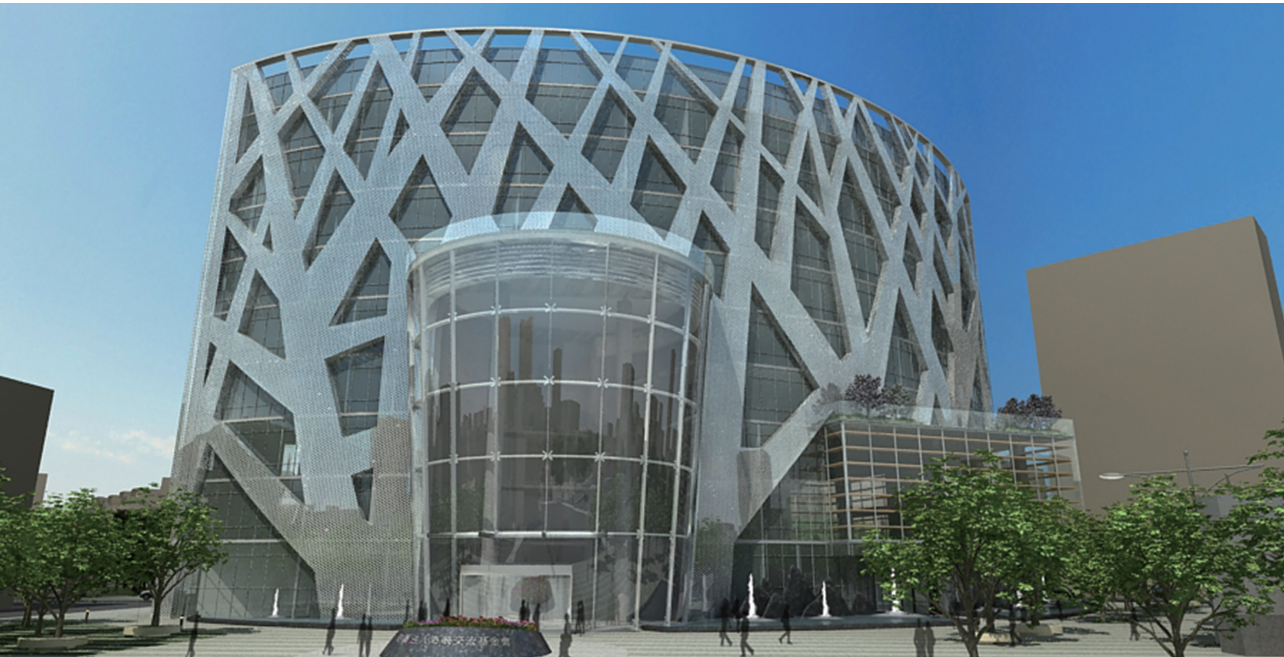


節能實例 Energy Saving Project Case Study



海峽交流基金會 The Straits Exchange Foundation 採用TG 灰色雙銀低輻射中空玻璃 Glass Type: TG Gray Double Low-E CLR (GY-TDE)

「海峽交流基金會」位於台北市大直北安路的新大樓，建築物帷幕外牆是台玻與閻辰昌建築師共同研發設計，獲得「建物外玻璃熱透過率(THT)值在0.18以下的綠建築節能(銀級)標章」。建物外牆90%都是玻璃結構，採用台玻Low-E節能雙層玻璃，相較採用一般玻璃，預估可減少50%的冷氣耗電費。主要區分三大部分：

- 1. 大廳「天燈」玻璃結構體總高20公尺，入口用結構玻璃方式支撐5片大玻璃，組成倒錐型立體天燈，每片約一層樓高，尺寸完全不同尤其以異形切割加工為Low-E節能雙層玻璃，中間為12mm惰性氣體Argon的空氣層。
- 2. 藏在鋁板樟樹後面的門窗玻璃，是外牆面積最大的玻璃結構，採用Low-E節能雙層玻璃，中間為6mm惰性氣體的空氣層，能有效克服西曬，增強阻隔熱能。
- 3. 建物右側「大會議廳」，考慮到使用的頻率與功能性，控制阻隔熱能，並減少太陽光所造成的眩光，同時防紅外線與紫外線，採用Low-E節能雙層玻璃，中間為8mm惰性氣體的空氣層，讓會議室光源柔和。

The Straits Exchange Foundation has its office in a new building at Bei-an Road, Dazhi, Taipei. The building was awarded as a green building on the merit of external glazing with a coefficient of thermal transmittance (THT) smaller than 0.18 (Silver Level) for its curtain wall, designed cooperatively by TGI and architect Charles C. Yen. 90% of the building's external wall is made of glass structure, glazed with TGI's Low-E energy-saving insulating glass units, saving about 50% of electricity cost for air conditioning compared with common glass. The building consists of three major sections:

- 1. The lobby "Sky Lantern", built with glass structures 20 meters high, has adopted structural glass for its entrance, supporting five large-sized glass panels and forming a reversed conical shape. Each glass panel, measuring one storey in height, has different dimensions and is processed into Low-E energy-saving insulating glass units with a 12mm Argon-filled space.
- 2. The glazing of doors and windows behind the aluminum camphor tree is the largest exterior glass structure, installed with Low-E energy-saving insulating glass units with a 6mm Argon-filled space, effectively overcoming the direct exposure to afternoon sun and enhancing the insulation of heat.
- 3. Considering the frequency of use and functions of the Convention Hall on the right side of the building, Low-E energy-saving insulating glass units with an 8mm Argon-filled space was used for the glazing. Hence, the heat, sunlight glare, infrared light and ultraviolet light were effectively controlled or reduced, illuminating the hall with soft and glare-free light.

股務記錄 Stock

年 Year	加權指數 Taixex		股價 Stock Price		股利 Dividend	
	High	Low	High	Low	Cash	Stock
1973	514	225	38.60	25.20	1.00	2.00
1974	498	188	35.20	11.30	0.70	1.80
1975	429	190	28.30	13.60	0.70	1.80
1976	417	257	26.95	17.00	2.00	0.84
1977	450	313	27.65	17.30	0.80	1.70
1978	688	447	36.00	24.80	1.24	1.96
1979	659	502	35.40	24.40	2.072	1.428
1980	599	480	32.20	23.30	1.889	1.111
1981	600	502	27.70	20.50	0.50	1.50
1982	546	421	23.00	15.40	0.20	1.10
1983	765	434	38.20	17.10	0.72	1.48
1984	969	764	37.00	30.20	0.60	1.60
1985	840	636	33.10	20.30	—	1.40
1986	1039	839	40.10	31.70	—	1.60
1987	4673	1063	95.00	38.70	—	1.80
1988	8789	2341	125.00	58.50	—	1.80
1989	10773	4873	188.00	78.00	—	2.00
1990	12495	2560	144.00	36.90	—	1.80
1991	6305	3316	71.00	39.70	0.458	1.042
1992	5391	3327	47.50	28.00	0.35	1.00
1993	6070	3135	53.00	29.70	0.35	1.00
1994	7183	5194	65.00	41.70	0.35	1.50
1995	7051	4503	63.50	46.00	0.35	1.50
1996	6982	4690	67.50	47.50	—	1.903
1997	10116	6802	66.50	36.30	0.76	1.09
1998	9277	6251	44.90	30.30	1.35	—
1999	8608	5474	34.80	20.10	1.25	—
2000	10393	4555	39.80	22.00	0.80	0.81
2001	6104	3411	33.20	17.80	1.00	—
2002	6484	3846	29.10	17.60	0.30	0.70
2003	6182	4044	28.60	20.30	0.40	0.80
2004	7135	5255	33.00	24.30	0.50	1.00
2005	6600	5565	31.50	23.70	0.40	0.80
2006	7823	6232	30.40	21.60	0.24	0.96
2007	9859	7306	46.30	25.55	0.40	0.80
2008	9309	3955	41.55	13.30	0.20	0.30
2009	8188	4165	27.70	15.40	0.20	0.30
2010	8990	7072	38.50	24.60	0.60	1.00
2011	9220	6609	53.70	27.10	0.45	0.45
2012	8144	6895	37.30	23.75	0.10	—
2013	8647	7603	35.20	25.70	0.10	—
2014	9569	8264	33.50	21.00	—	—
Total	—	—	—	—	23.33	45.67

主要股東(2015-04)		(%)
Major Shareholders		
台豐投資股份有限公司	15.29	
Tai Hong Investment Corp.		
合和投資股份有限公司	13.37	
Ho Ho Investment Corp.		
台建投資股份有限公司	9.08	
Tai Chien Investment Corp.		
台玉投資股份有限公司	6.58	
Tai Yu Investment Corp.		
台成投資股份有限公司	6.20	
Tai Cheng Investment Corp.		
林建成嘉記股份有限公司	4.81	
Lim Ken Seng Kah Kih Corp.		
台嘉投資股份有限公司	4.34	
Tai Chia Investment Corp.		
富邦人壽保險股份有限公司	3.29	
Fubon Life Insurance Corp.		
南山人壽保險股份有限公司	2.63	
Nan Shan Life Insurance Corp.		
台玻職工退休基金管委會	1.49	
TGI Retirement Fund.		
東南亞玻璃工業股份有限公司	1.05	
S.E.A. Glass PTE. Ltd.		
Total	68.13	

股東總人數(2015-04)		41,050 人
Total Shareholders		
2014 總成交量數	296,635,392 股	
Transaction Volume		
員工總人數(2015-04)	台灣	4,651 人
Employees	大陸	12,111 人
	合計	16,762 人

決算日期: 2014年12月31日
Fiscal Year Ends on December 31, 2014
股東常會: 2015年06月09日
General Shareholders' Meeting: June 09, 2015
公告: 公開資訊觀測站
Public Notice: mops.twse.com.tw/index.htm
辦理過戶: 台灣玻璃工業公司 股務課
Stock Transfer Registration: TGI Stock Affairs Div.
會計師: 安永聯合會計師事務所
C.P.A.: Ernst & Young